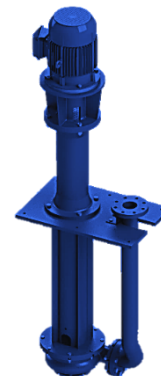


Vortex Verticale Range

Vortex high head pump



Sectors of Activity

- Automotive industry
- Mechanical engineering industry
- Sewage treatment plant
- Chemical industry
- Sewage treatment plant
- Paper industry

Applications

- Wastewater collection
- Lifting
- All liquids containing chips for deep underground tanks or fine particles, abrasives, sludge, sand, etc.

Paint coating

RE3C7 - C5M - C4

Material declination

- Cast iron GS 500 (Standard)
- Cast iron NI HARD (Chrome cast iron)
- Steel 24 - 230 - Stainless steel 316l - Crucible - Bronze

What is Vortex technology?

The vortex pump is a type of pump used to pump liquids containing solid particles in suspension. It creates a "vortex" in the liquid, enabling the particles to be transported without the risk of blockage!

Highlights



- A pump with a proven track record in the automotive industry
- Large immersion height (2200mm) without lower bearing
- Dry running and assembly possible
- Wide choice of materials
- Quick dismantling version available
- No load on motor bearings
- Quick and easy maintenance
- Semi-elastic connection
- Adaptation of the metallurgy of the various components according to the load and type of swarf.

Customers



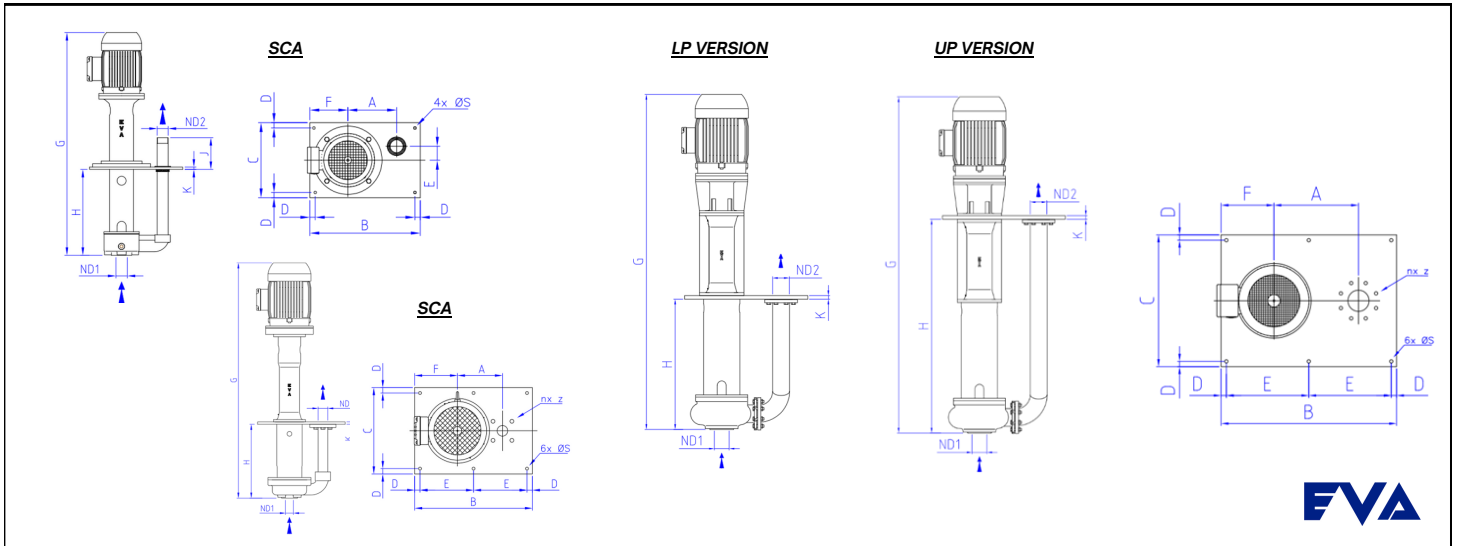
NTN

STELLANTIS



Features

ø Available	DN40 - DN50 - DN80 - DN100 - DN150 - DN200
Range Use	30 à 500 m ³ /h
Pressure Height	35 mce
Operating temperature	Jusqu'à 120°C
Sand concentration	15g/l - 200g/l



Dimensions

Type	ND1	ND2	P kW	N rpm	A	B	C	D	E	F	H	J	K	S	Weight kg	Frame motor
VMT 40 SCA AL	DN40 PN16	1" 1/2 G (DN40 PN16 option)	1.1	1500	181	410	280	20	52	141	442	130	10	12	28	90S
			1.5	64											90L	
			2.2	67											112M	
			3	71											100L	
			4	83											112M	
			1.5	56											90S	
			2.2	58											90L	
			3	70											100L	
			4	80											112M	
			5.5	87											112M	
			1.1	63											90S	
			1.5	66											90L	
2.2	72	100L														
3	76	112M														
4	83	112M														
1.5	61	90S														
2.2	63	90L														
3	75	100L														
4	85	112M														
5.5	92	112M														
VMT 40 SCA AL	DN40 PN16	1" 1/2 G (DN40 PN16 option)	1.1	1500	181	410	280	20	52	141	792	130	10	12	65	90S
			1.5	68											90L	
			2.2	74											100L	
			3	77											100L	
			4	89											112M	
			1.5	65											90S	
			2.2	68											90L	
			3	76											100L	
			4	88											112M	
			5.5	104											112M	
			1.1	117											100L	
			1.5	129											112M	
2.2	114	100L														
3	111	100L														
4	125	112M														
5.5	153	132S														
7.5	160	132M														
9.2	170	132M														
1.5	154	132S														
2.2	160	132M														
3	170	132M														
4	128	100L														
5.5	132	100L														
7.5	144	112M														
9.2	142	90L														
1.5	131	100L														
2.2	142	112M														
3	150	112M														
4	167	132S														
5.5	174	132M														
7.5	184	132M														
9.2	168	132M														
1.5	174	132S														
2.2	184	132M														
3	130	100L														
4	134	100L														
5.5	146	112M														
7.5	125	90L														
9.2	133	100L														
1.5	144	112M														
2.2	152	112M														
3	165	132S														
4	172	132M														
5.5	182	132M														
7.5	166	132S														
9.2	174	132S														
9.2	182	132M														

Type	ND1	ND2	P kW	N rpm	A	B	C	D	E	F	H	J	K	S	Weight kg	Frame motor
VM 80 SCA	DN80 PN16	DN80 PN16	5.5	1500	347	725	500	25	337.5	225	1200	-	25	18	334	132S
			7.5	348											132M	
			9.2	346											160M	
			11	375											160M	
			15	402											160L	
			18.5	451											180M	
			5.5	353											132S	
			7.5	367											132M	
			9.2	365											160M	
			11	394											160M	
			15	421											160L	
			18.5	470											180M	
5.5	288	132S														
7.5	295	132M														
9.2	304	160M														
11	333	160M														
15	349	160L														
18.5	398	180M														
5.5	357	132S														
7.5	371	132M														
9.2	310	160M														
11	398	160M														
15	422	160L														
18.5	474	180M														
5.5	356	132S														
7.5	380	132M														
9.2	379	160M														
11	407	160M														
15	431	160L														
18.5	483	180M														
5.5	290	132S														
7.5	297	132M														
9.2	306	160M														
11	335	160M														
15	351	160L														
18.5	400	180M														
11	483	160M														
15	507	160L														
18.5	559	180M														
22	560	180L														
30	620	200M														
37	721	225M														
45	766	225M														
18.5	688	180M														
22	689	180L														
30	755	200M														
37	851	225M														
45	907	225M														
15	658	160L														
18.5	707	180M														
22	708	180L														
30	774	200M														
37	880	225M														
45	926	225M														
55	978	250 SM														

Power Range

Pump Size	Q (m3/h)	mCW	rpm	Motor (kW)
40	3 à 7	3 à 10	1450	1,1 à 4
		8 à 20	2900	1,5 à 4
50/65x50	10 à 30	1,25 à 3	1000	1,1
		1,5 à 30	1450	1,5 à 5,5
		2 à 33	2900	1,5 à 5,5
80	30 à 100	1,5 à 8,5	1000	1,1 à 4
		1,5 à 12	1450	2,2 à 15
100	60 à 110	0,5 à 8,5	1000	1,1 à 5,5
		1,5 à 16	1450	2,2 à 15
100HW	70 à 120	5 à 16	1000	2,2 à 9,2
		3 à 36	1450	11 à 30
150HW	80 à 200	1,5 à 14	1000	2,2 à 15
		3,6 à 33	1450	11 à 30